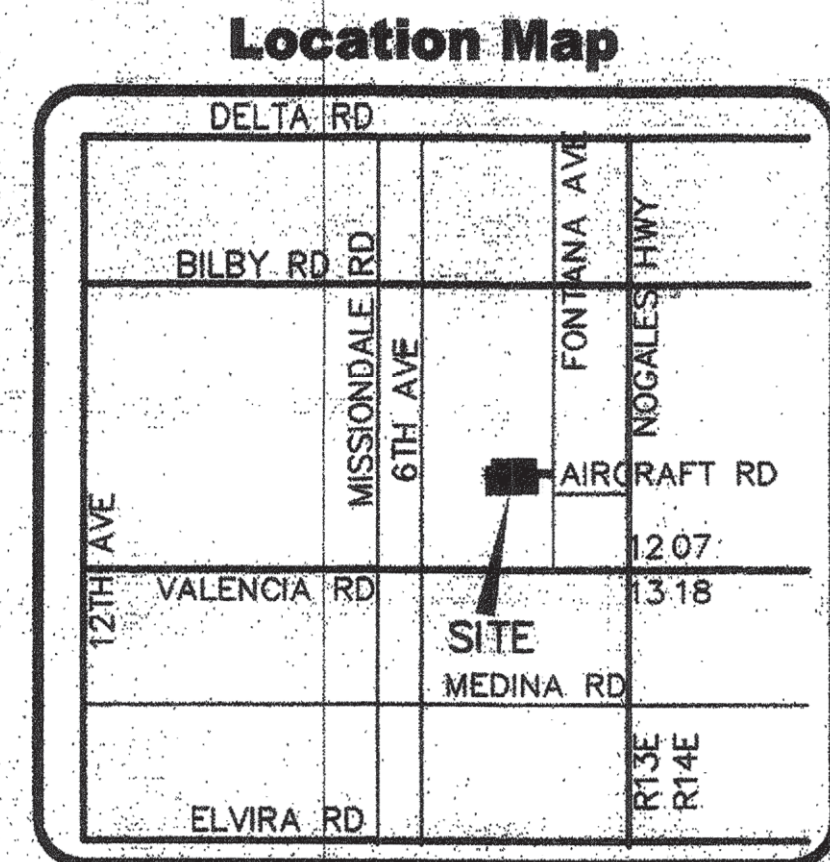


Fontana Estates 1-16 and Common Area A

Book 61, Page 76

Public Paving Plans



SEC 12, T 15 S, R 13 E
G&SRM, PIMA COUNTY, ARIZONA
SCALE: 3" = 1 MILE

PROJECT ADMINISTRATIVE ADDRESS
6358 S. FONTANA AVENUE, TUCSON, ARIZONA.

Legend

- FOUND BRASS CAP SURVEY MONUMENT
- BRASS CAP SURVEY MONUMENT TO BE SET
- FOUND PROPERTY CORNER
- PROPERTY LINE
- LOT LINE
- STREET CENTERLINE
- EASEMENT
- EXISTING CURB
- NEW WEDGE CURB/SIDEWALK
- PROPOSED FINISHED SPOT ELEVATION
- DIRECTION OF SURFACE FLOW

OWNER/DEVELOPER:

CAMFE LLC
8372 N. MOUNTAIN STONE PINE WAY
TUCSON, ARIZONA 85743
(520) 979-2267
ATTN: JOSE PABLO CAMPILLO
JPCAMPILLO@TIERRANTIGUA.COM

Index of Sheets

1 COVER SHEET	1 OF 4
2 PUBLIC PAVING PLAN/PROFILE	2 OF 4
3 GENERAL NOTES AND DETAILS	3 OF 4
4 DETAILS	4 OF 4

JAS ENGINEERING
200 EAST YVON DRIVE TUCSON, ARIZONA 85704
(520) 390-7920
STANLEY19263@GMSN.COM

T06PI00002
T06BU00014
S05-077

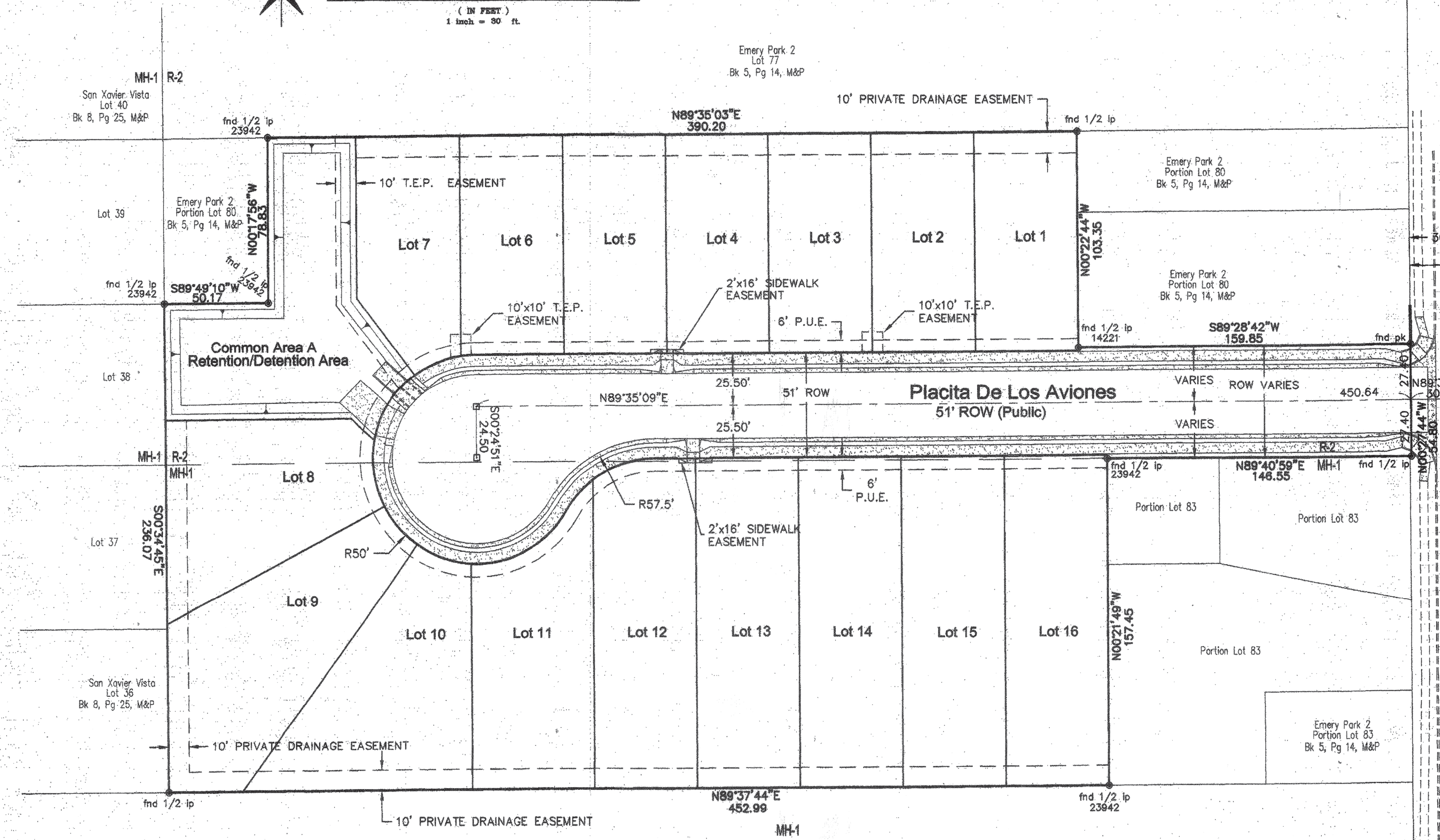
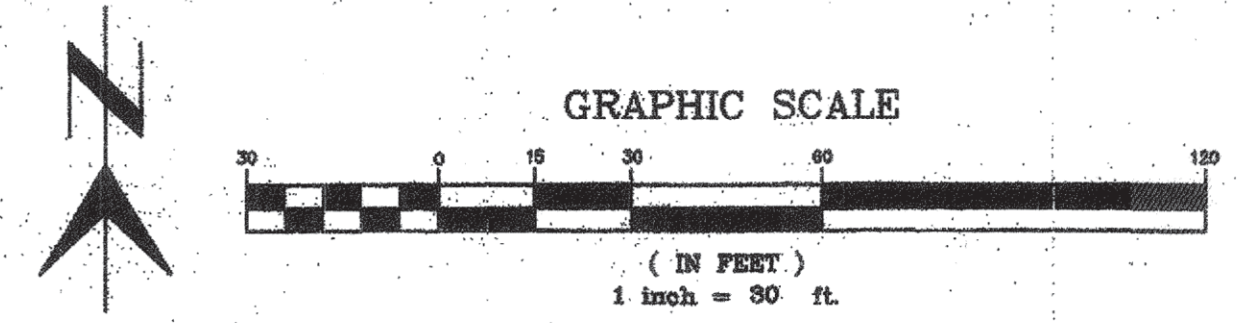
UPC-2024-085

DEPARTMENT OF TRANSPORTATION/ENGINEERING DIVISION

FONTANA ESTATES LOTS 1-16 AND COMMON AREA A (RETENTION)
A RESUBDIVISION OF PORTIONS OF LOTS 80 AND 83,
EMERY PARK NO 2, BK 5, PG 14, M&P
PUBLIC PAVING PLANS



Approvals	Signatory	Date	Approved	1 OF 4
PERMITS AND CODES SECTION	<i>[Signature]</i>	10/24	Approved _____ 20____	1 OF 4
TRAFFIC ENGINEERING	<i>[Signature]</i>	10/24		
STREETS AND TRAFFIC MAINTENANCE	<i>[Signature]</i>	10/24		
ENGINEERING ADMINISTRATOR	<i>[Signature]</i>	10/24		
DTM LANDSCAPE ARCHITECT	<i>[Signature]</i>	10/24	TRANSPORTATION DIRECTOR	
DRWN. BY _____ 20____	DSGN. BY _____ 20____	CHKD. BY _____ 20____	REF. _____	SCALE: _____
PLAN NO. I-2006-083				

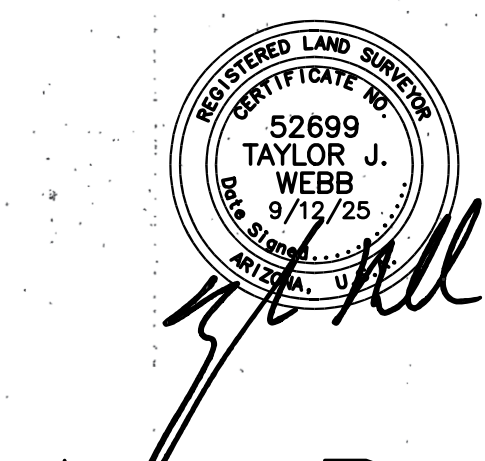


Constructed by:
King Excavating LLC
Construction Company
8/12/2025
Completion Date

Red-Lines by:
On Point Surveying, PLLC
Construction Administrator & Company
9/12/2025
Completion Date

Record Document by:
On Point Surveying, PLLC
As-Built Designer & Company
9/12/2025
Completion Date

As-built changes for the Record Document need to be typed / CAD drawn and clouded with a change triangle indicating the changes are for the Record Document. Replaced grades or other items need to be crossed out with a single line with the new elevation or other information clouded next them. Guidelines can be sent.



As-Built

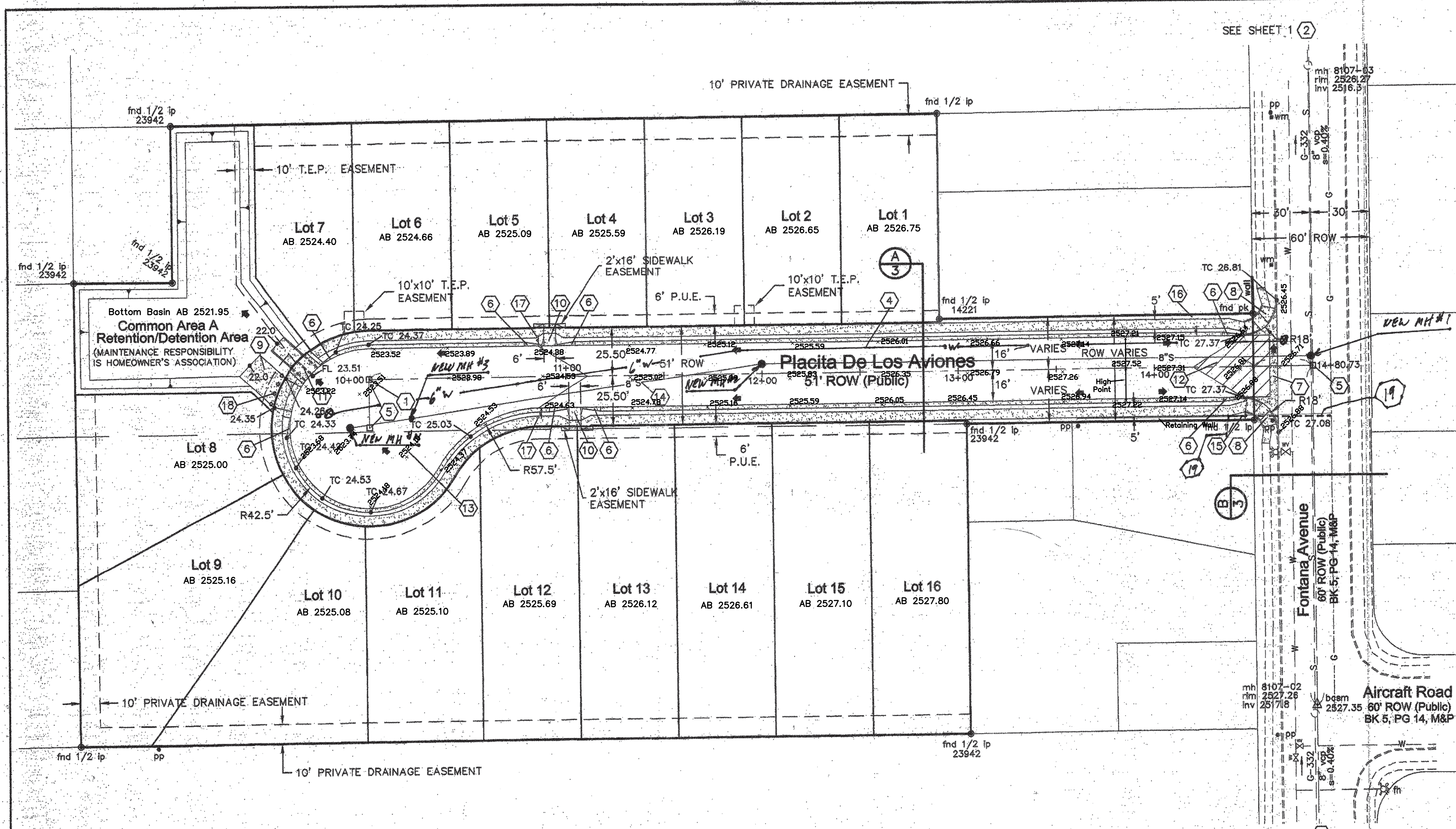
On Point Surveying, PLLC
6200 N Shannon Road
Tucson, AZ 85741
(520)279-1884 or (520)490-2467

Seal should be clouded, with change triangle (?) and that triangle entered in the revision area. That change triangle placed next to all as-built changes noted.

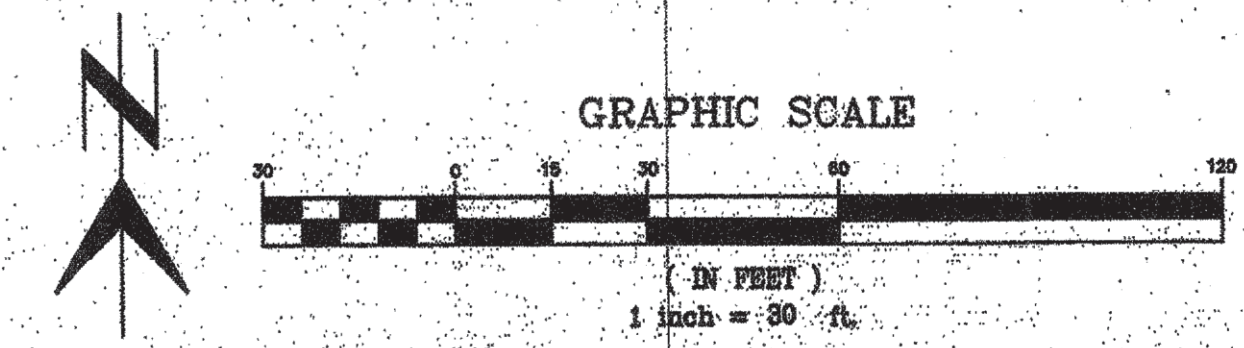
ORIGINAL PLAN APPROVAL EXPIRED. NEW ENGINEER OF RECORD SHALL PROVIDE DESIGN AMENDMENTS AND/OR MODIFICATIONS AS NEEDED TO ADDRESS ANY AND ALL ISSUES ENCOUNTERED DURING CONSTRUCTION AND ESTABLISH LINE AND GRADE LAYOUT FOR THE WORK AS IT PROGRESSES.

Record Document
Dated: 9/12/2025

NO.	DATE	REVISION	BY	CHKD.	APPR.



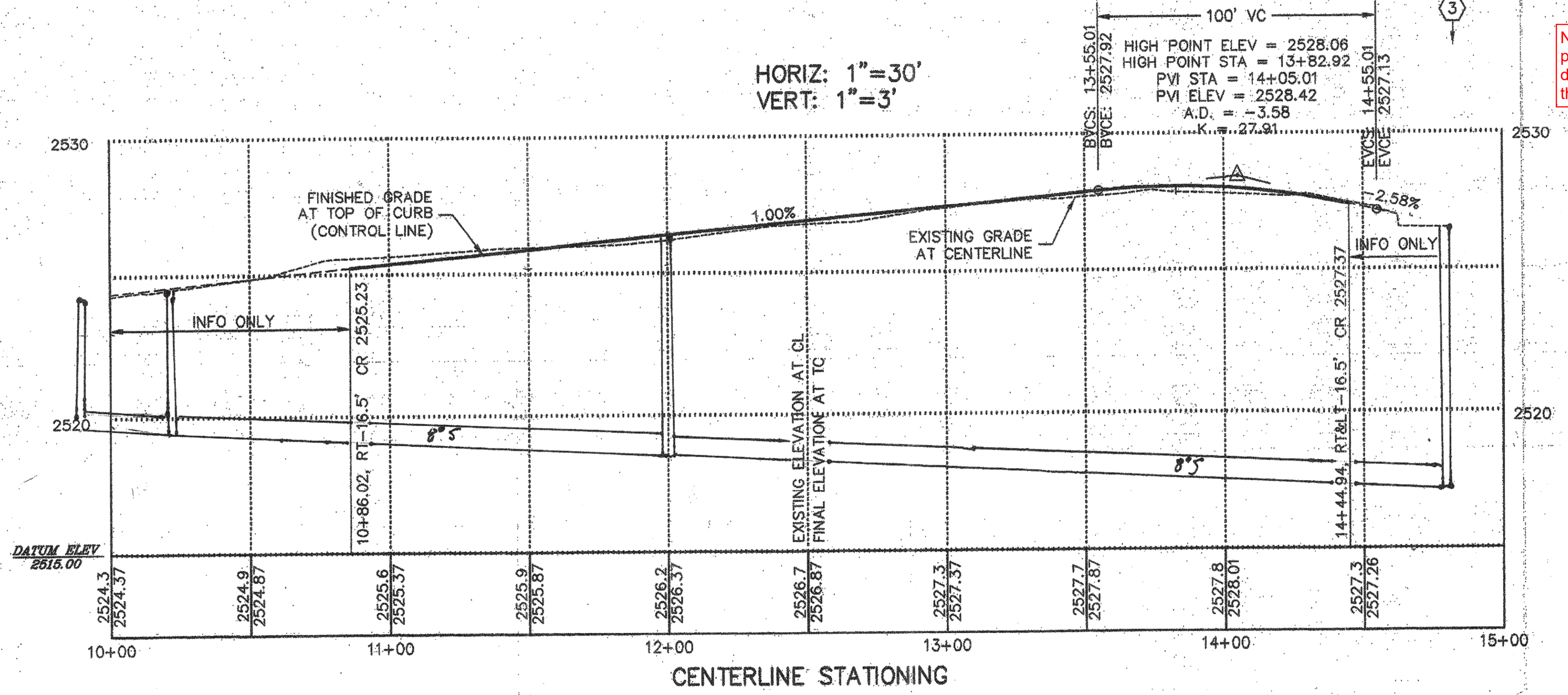
SEE SHEET 1



Paving Keyed Notes

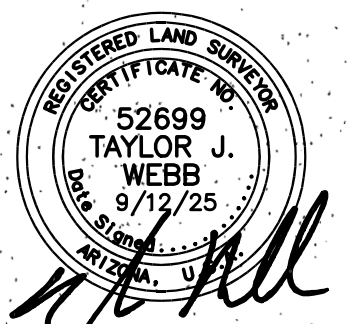
- ① SEE SHEET 1 FOR LOCATION OF STREET CENTERLINE STATION 10+00
- ② BASIS OF BEARINGS: MONUMENTED CENTERLINE OF FONTANA AVENUE BETWEEN E. AIRCRAFT ROAD AND E. VALESKA ROAD, SAID BEARING BEING N00°24'51"W.
- ③ BASIS OF ELEVATIONS: 'X' ON BACK OF WEST CURB RETURN ON THE NORTHWEST CORNER OF THE INTERSECTION OF E. VALENCIA ROAD AND S. FONTANA AVENUE PER COT FIELD BOOK 1989 D-1, PAGE 60, #333D. ELEVATION = 2530.014.
- ④ CONSTRUCT 32'-WIDE ASPHALT STREET WITH WEDGE CURB AND 5'-WIDE CONCRETE SIDEWALKS. SEE SECTION A, SHEET 3 AND PROFILE THIS SHEET.
- ⑤ INSTALL SURVEY MONUMENT PER PAG SD 103.
- ⑥ PROVIDE 10'-LONG CONCRETE CURB TRANSITION TO VERTICAL CURB PER PAG SD 210.
- ⑦ SAWCUT EXISTING ASPHALT PAVEMENT ONE FOOT EAST OF EXISTING CONCRETE CURB. REMOVE AND DISPOSE OF SAWCUT ASPHALT AND 68 LF EXISTING CONCRETE CURB AND SIDEWALK. CONSTRUCT NEW CONCRETE VALLEY GUTTER PER PAG SD 208. FIELD ADJUST ELEVATIONS AS REQUIRED TO MATCH EXISTING CURBS AT RETURNS.
- ⑧ CONSTRUCT LIMITED ROW CURB ACCESS RAMPS PER PAG SD 207 TYPE 4, SHEET 3 OF 5 (MODIFIED PER DETAIL 2, SHEET 3). CONTROL POINTS ARE 14+57.64, LT&RT-21.25'. CURB ACCESS RAMPS SHALL BE CONSTRUCTED WITH TRUNCATED DOMES.
- ⑨ CONSTRUCT 15'-WIDE DRIVE APRON AND ACCESS DRIVE TO RETENTION BASIN BOTTOM. SEE PAG SD 206 AND DETAIL 4, SHEET 4.
- ⑩ CONSTRUCT 6'-WIDE CURB ACCESS RAMPS CENTERED AT STAS 10+92, LT-16' AND 11+05, RT-16' PER PAG SD 207 TYPE 3, SHEET 4 OF 5. CURB ACCESS RAMPS SHALL BE CONSTRUCTED WITH TRUNCATED DOMES. SEE DETAIL 3, SHEET 3.
- ⑪ CONSTRUCT 2-CELL TYPE 3 SIDEWALK SCUPPER PER PAG SD 205.5, PROVIDE 6" SCUPPER OPENING. INSTALL HANDRAIL AT BACK OF SCUPPER PER PAG SD 105
- ⑫ NO-CROWN STA EAST OF STA 14+20
- ⑬ NO-CROWN STA WEST OF STA 11+11
- ⑭ SEE SANITARY SEWER PLAN G-2001-018 FOR SEWER DETAILS
- ⑮ INSTALL R1-1 ('STOP') SIGN AT 14+45, RT-25'
- ⑯ INSTALL R14-2 ('NO OUTLET') SIGN AT 14+25, LT-19'
- ⑰ INSTALL 'NO PARKING' SIGNS AT 10+86, RT<-19' (BOTH FACING EAST). SEE DETAIL 1, SHEET 3.
- ⑱ INSTALL REMOVABLE POST BARRICADES ACROSS DRIVEWAY WIDTH AT 5' O.C. PER PAG SD 107.
- ⑲ 1" PLASTIC GAS SERVICE. POT HOLE TO VERIFY DEPTH, MAINTAIN CLEARANCE AND PROTECT IN PLACE.

HORIZ: 1"=30'
VERT: 1"=3'



No hand-written please as it more difficult to read than typed.

ORIGINAL PLAN APPROVAL EXPIRED, NEW ENGINEER OF RECORD SHALL PROVIDE DESIGN AMENDMENTS AND/OR MODIFICATIONS AS NEEDED TO ADDRESS ANY AND ALL ISSUES ENCOUNTERED DURING CONSTRUCTION AND ESTABLISH LINE AND GRADE LAYOUT FOR THE WORK AS IT PROGRESSES.



As-Built

On Point Surveying, PLLC
6200 N Shannon Road
Tucson, AZ 85741
(520)279-1884 or (520)490-2467

T06P100002
T06BU0014
S05-077

JAS ENGINEERING
200 EAST YVON DRIVE TUCSON, ARIZONA 85704
(520) 390-7920
STANLEY19263@MSN.COM

DEPARTMENT OF TRANSPORTATION/ENGINEERING DIVISION

FONTANA ESTATES LOTS 1-16 AND COMMON AREA A (RETENTION)
A RESUBDIVISION OF PORTIONS OF LOTS 80 AND 83,
EMERY PARK NO 2, BK 5, PG 14, M&P

PUBLIC PAVING PLANS

Record Document
Dated: 9/12/2025

2 OF 4

NO. DATE REVISION BY CHKD. APPR.

DRWN. BY 20 DSGN. BY 20 CHKD. BY 20

PLAN NO. I-2006-083